

**WHITEHEAD BUILDING -- FIRST FLOOR**

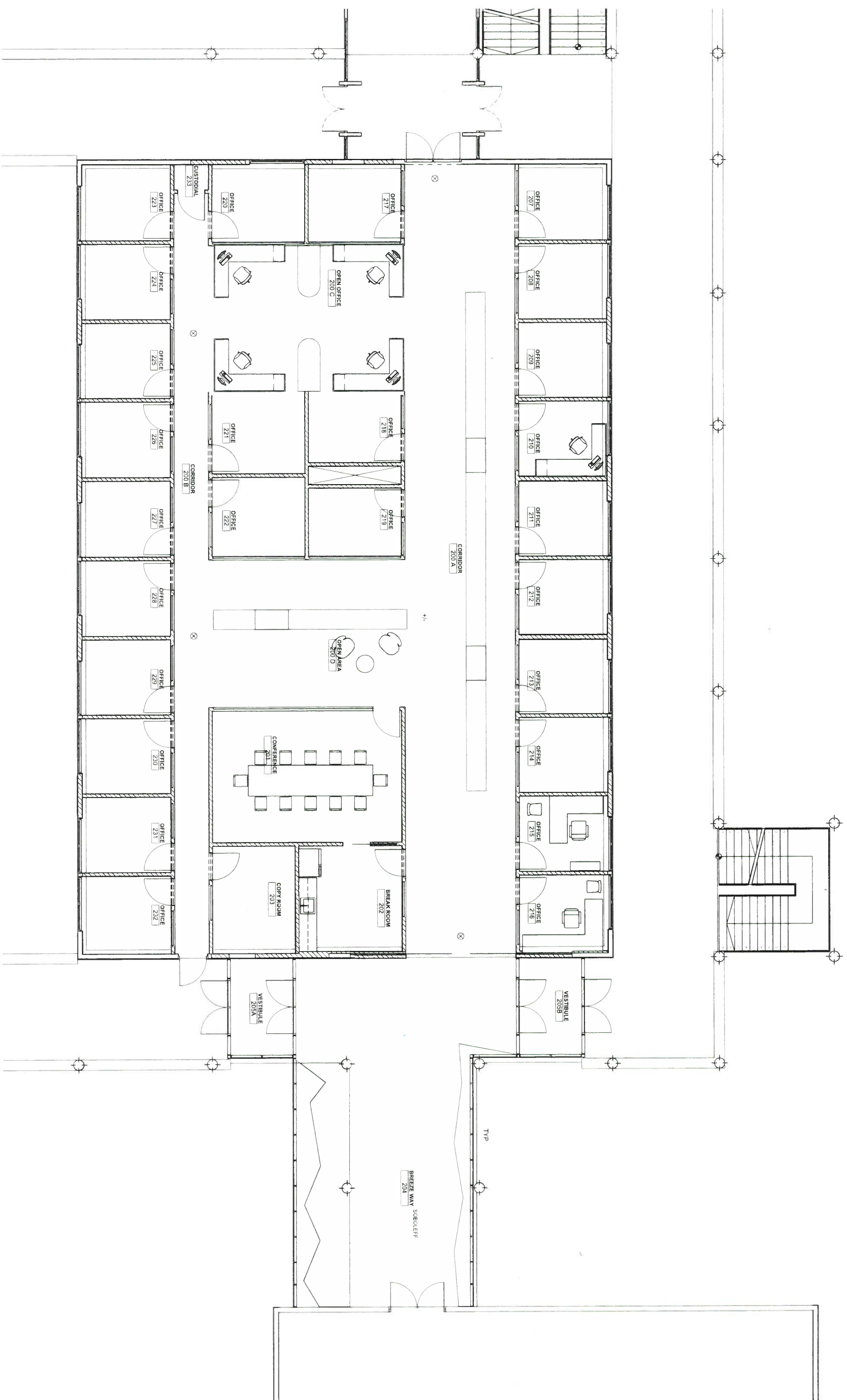
Building No: JS-105

UPDATED AUGUST 2017



**UNIVERSITY of ALASKA SOUTHEAST**

UAS FACILITIES SERVICES - FACILITIES PLANNING AND CONSTRUCTION



# WHITEHEAD BUILDING – SECOND FLOOR

Building No: JS-105

UPDATED AUGUST 2017

# UNIVERSITY of ALASKA SOUTHEAST



UAS FACILITIES SERVICES - FACILITIES PLANNING AND CONSTRUCTION