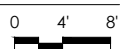
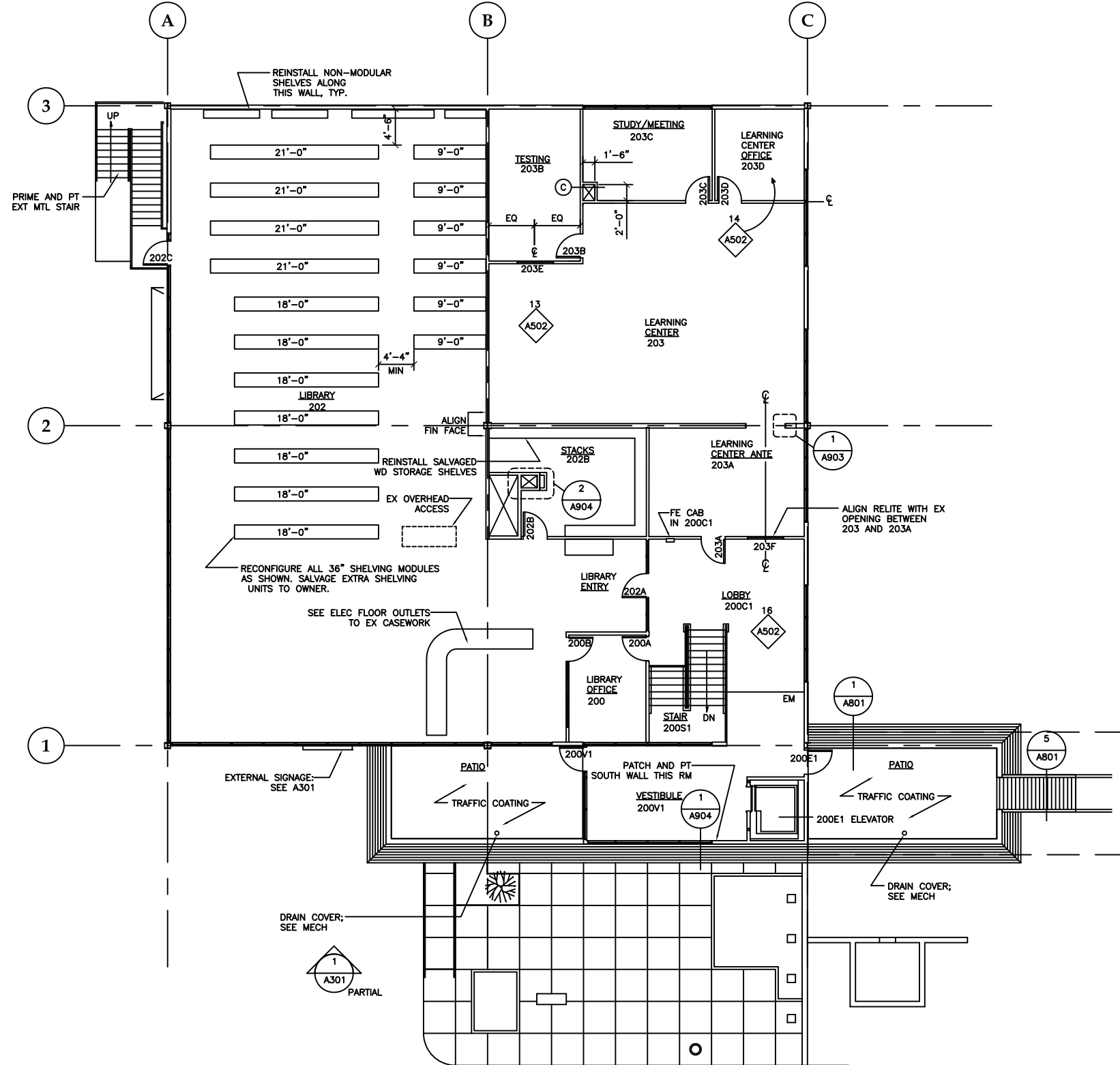


2 First Floor Plan



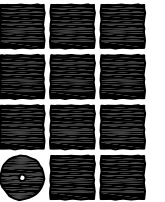
PLAN NOTES

- 1) DIMENSIONS TO NEW PARTITIONS ARE TO FACE OF STUD, UNLESS OTHERWISE NOTED.
- 2) DIMENSIONS TO EXISTING EXTERIOR WALLS AND SHEAR WALLS ARE TO FINISH FACE OF EXISTING WALLBOARD, UNLESS OTHERWISE NOTED.
- 3) WALL TYPES ARE TYPE-A, UNLESS OTHERWISE NOTED.



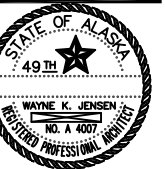
1 ZIEGLER BUILDING FLOOR PLAN: SECOND FLOOR

SCALE: 0 4' 8' 16'



**Jensen
Yorba
Lott
Inc.**

522 West 10th Street
Juneau, Alaska 99801
phone 907-586-1070
fax 907-586-3959
jensenyorbaltott.com



**University of Alaska Southeast
Ketchikan Campus**
**UPPER CAMPUS IMPROVEMENTS:
PAUL and ZIEGLER BUILDINGS REMODEL**
UAS PROJECT NO. 2003-op-14A

AS-BUILT April 2009

REVISIONS

- △ .
- △ .
- △ .
- △ .

SHEET TITLE
**ZIEGLER BUILDING
FLOOR PLAN**

DATE: MARCH 10, 2005
FILE: 0315

A204